



Save the Children

CHILDREN FIRST

OUR MANDATORY 24/7 CODE
OF BEHAVIOUR FOR WORKING
SAFELY WITH CHILDREN

A CHILD IS ANYONE
UNDER THE AGE
OF 18 – WHEREVER
YOU ARE



Concerned
about something?

REMEMBER...

...You don't need to be sure.

...You don't need to
investigate.

...You don't need permission.

...You don't need to know
whether it involves a staff
member/volunteer or not.

You ONLY need to report.

DO...


*...challenge attitudes,
behaviours and actions
that contravene this
code of behaviour*



...ensure you're never alone with children when working; always be within sight or hearing of another adult

...respect a child's right to personal privacy







*...risk assess every
element of every activity
that involves children
(including online)*



*...treat all
children with
dignity and
respect*



...sleep in separate areas to children you're working or volunteering with



...treat all children according to their needs, do not show favouritism

...encourage feedback
from children & support
them to share any
concerns with you



...take all concerns seriously
- including those which
happened a long time ago



Keeping children safe is our top priority in everything we do. Child abuse happens everywhere, and we're committed to tackling it.

Reporting concerns rapidly is the best way to help. Report all concerns (even 'low-level' concerns), as soon as possible and always within **24 hours via Clue, or email to:**

FocalPoint@savethechildren.org.uk

or to our

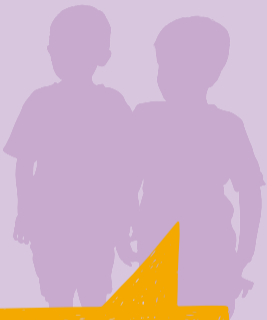
Integrity Line by calling

0800 085 2563

(available 24hrs & can be anonymous).

If you're in an SCI Country Office, use their reporting process & then report to SCUK too.

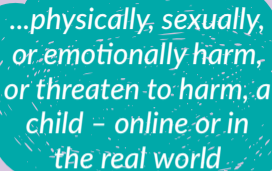
NEVER...



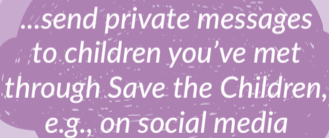
*...engage in any form
of sexual activity with
anyone under the age
of 18, anywhere*

...take part in inappropriate behaviour with or in the presence of children (including online or via mobile phones)







...physically, sexually,
or emotionally harm,
or threaten to harm, a
child - online or in
the real world



...send private messages
to children you've met
through Save the Children,
e.g., on social media



...drink alcohol or
use harmful substances
when working with children,
and never supply these
to a child



...do things of a personal
nature for a child that
they can do for
themselves

...engage in relationships that could be an abuse of trust or power, e.g., a sexual relationship with someone who participates in our activities



...place children in unsafe or insecure situations



IF A CHILD TELLS YOU THEY ARE BEING ABUSED:

- Ensure the **child is not in immediate danger**
- Allow the **child to speak without interruption** and take what they say seriously
- Be **understanding and reassuring**, but do not give your opinion
- **Do not promise to keep secrets**, but do say you need to tell someone who can help
- **Write careful notes** of what was said, using the actual words wherever possible
- **Take the contact details of the child** and explain that someone will be in touch with them soon to help
- **Report it to SCUK Safeguarding immediately via Clue or FocalPoint@savethechildren.org.uk**

YOU'RE WORRIED ABOUT SOMEONE'S BEHAVIOUR OR YOU'VE HEARD SOMETHING:

- **Write careful notes of what you witnessed**, heard, or were told, including the contact details of relevant people
- **Contact SCUUK Safeguarding via Clue or on FocalPoint@savethechildren.org.uk**
- **If you want to report anonymously, you can do this on 24/7 via the Integrity Line (0800 085 2563)**
– but be aware that anonymity might limit our ability to investigate
- If your concern is about the **Director of Safeguarding**, reach out directly to our **CEO**
- If you're in an SCI Country Office, **use their reporting process & then report to SCUUK too**

A stylized illustration of a person's silhouette in a red top, facing forward. A teal speech bubble is positioned over the lower part of the silhouette. The entire scene is enclosed in a white rounded rectangular frame against a yellow background.

*But what if
I'm wrong?*

A stylized illustration of a person's silhouette in a red top, shown in profile facing right. A teal speech bubble is positioned over the lower part of the silhouette. The entire scene is enclosed in a white rounded rectangular frame against a yellow background.

*But what if
you're not?*